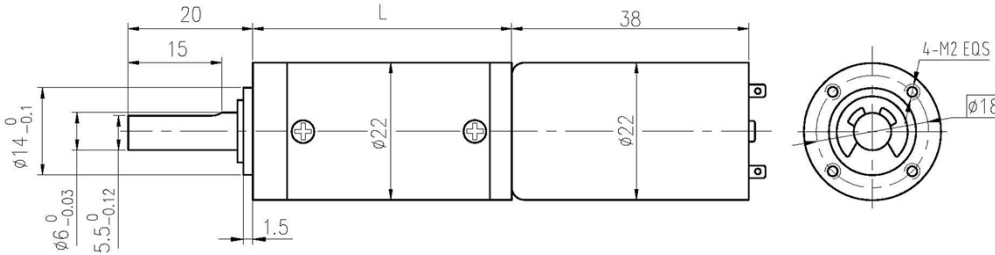


永磁直流行星齿轮电机 (内齿圈材质: 金属)
PM DC Planetary Gear Motor (Ring Gear Material: Metal)

22JX10K/22ZY38B Φ22 行星减速器, 允许转矩范围: 0.1N.m~1.0N.m
22mm OD Planetary Gearbox, Permissible Load Range: 0.1N.m~1.0N.m

● 外形和安装尺寸 Dimensions



● 电动机主要技术参数 Motor Technical Data

| 电机型号 TYPE | 额定电压 Rated voltage VDC | 空载转速 No-load speed r/min | 空载电流 No-load current mA | 额定转速 Rated speed r/min | 额定转矩 Rated torque mN.m | 输出功率 Output power W | 额定电流 Rated current mA | 堵转力矩 Stall torque mN.m | 堵转电流 Stall current A |
|---------------|------------------------------|--------------------------------|-------------------------------|------------------------------|------------------------------|---------------------------|-----------------------------|------------------------------|----------------------------|
| 22ZY38B-1260 | 12 | 6000 | 100 | 5000 | 3 | 1.56 | 250 | 17 | 0.87 |
| 22ZY38B-12100 | 12 | 10000 | 150 | 8700 | 3 | 2.7 | 500 | 28 | 2.3 |

● 齿轮减速电机主要技术参数 Gear Motor Technical Data

配置 22ZY38B-1260 直流电机 (22ZY38B-1260 DC Motor)

| 减速比 Reduction ratio | 3.7 | 5.2 | 14 | 19 | 27 | 51 | 71 | 100 | 139 | 189 | 264 | 369 | 516 |
|---|-------|-------|-------|-------|-------|------|------|------|------|------|------|------|------|
| 减速级数 Number of gear trains | 1 | 1 | 2 | 2 | 2 | 3 | 3 | 3 | 3 | 4 | 4 | 4 | 4 |
| 减速器长度(L) Length(L) mm | 24.4 | 24.4 | 33.0 | 33.0 | 33.0 | 41.5 | 41.5 | 41.5 | 41.5 | 49.8 | 49.8 | 49.8 | 49.8 |
| 空载转速 No-load speed r/min | 1617 | 1158 | 429 | 316 | 222 | 118 | 85 | 60 | 43 | 32 | 23 | 16 | 12 |
| 额定转速 Rated speed r/min | 1388 | 994 | 357 | 263 | 185 | 98 | 70 | 50 | 36 | 26 | 19 | 14 | 9.7 |
| 额定转矩 Rated torque N.m | 0.010 | 0.014 | 0.034 | 0.046 | 0.066 | 0.11 | 0.16 | 0.22 | 0.30 | 0.37 | 0.51 | 0.72 | 1.0 |
| 最大瞬间允许负载 Max. permissible load in a short time N.m | 0.3 | 0.3 | 1.2 | 1.2 | 1.2 | 2.5 | 2.5 | 2.5 | 2.5 | 3 | 3 | 3 | 3 |

配置 22ZY38B-12100 直流电机 (22ZY38B-12100 DC Motor)

| 减速比 Reduction ratio | 3.7 | 5.2 | 14 | 19 | 27 | 51 | 71 | 100 | 139 | 189 | 264 | 369 | 516 |
|---|-------|-------|-------|-------|-------|------|------|------|------|------|------|------|------|
| 减速级数 Number of gear trains | 1 | 1 | 2 | 2 | 2 | 3 | 3 | 3 | 3 | 4 | 4 | 4 | 4 |
| 减速器长度(L) Length(L) mm | 24.4 | 24.4 | 33.0 | 33.0 | 33.0 | 41.5 | 41.5 | 41.5 | 41.5 | 49.8 | 49.8 | 49.8 | 49.8 |
| 空载转速 No-load speed r/min | 2695 | 1931 | 714 | 526 | 370 | 196 | 141 | 100 | 72 | 53 | 38 | 27 | 19 |
| 额定转速 Rated speed r/min | 2480 | 1776 | 621 | 458 | 322 | 171 | 123 | 87 | 63 | 46 | 33 | 24 | 17 |
| 额定转矩 Rated torque N.m | 0.010 | 0.014 | 0.034 | 0.046 | 0.066 | 0.11 | 0.16 | 0.22 | 0.30 | 0.37 | 0.51 | 0.72 | 1.0 |
| 最大瞬间允许负载 Max. permissible load in a short time N.m | 0.3 | 0.3 | 1.2 | 1.2 | 1.2 | 2.5 | 2.5 | 2.5 | 2.5 | 3 | 3 | 3 | 3 |

● 电动机特性图 Motor Characteristic Figure

