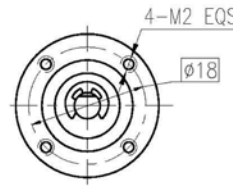
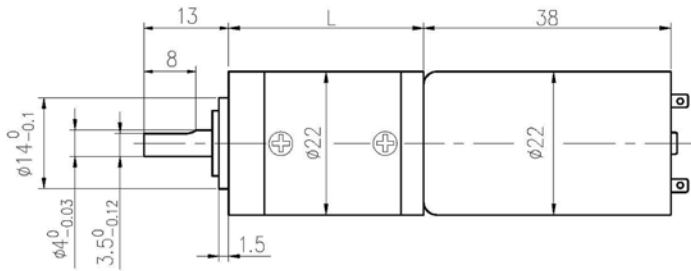


Φ22 行星减速器, 允许转矩范围: 0.05N.m~0.5N.m

22JX5K/22ZY38B

*22mm OD Planetary Gearbox,
Permissible Load Range: 0.05N.m~0.5N.m*

● 外形和安装尺寸 Dimensions



● 电动机主要技术参数 Motor Technical Data

电机型号 TYPE	额定电压 Rated voltage VDC	空载转速 No-load speed r/min	空载电流 No-load current mA	额定转速 Rated speed r/min	额定转矩 Rated torque mN.m	输出功率 Output power W	额定电流 Rated current mA	堵转力矩 Stall torque mN.m	堵转电流 Stall current A
22ZY38B-1245	12	4500	85	3340	3	1.0	180	13.2	0.48
22ZY38B-1260	12	6000	100	5000	3	1.56	250	17	0.87

● 齿轮减速电机主要技术参数 Gear Motor Technical Data

配置 22ZY38B-1245 直流电机 (22ZY38B-1245 DC Motor)

减速比 Reduction ratio	3.7	5.2	14	19	27	51	71	100	139	189	264	369	516
减速级数 Number of gear trains	1	1	2	2	2	3	3	3	3	4	4	4	4
减速器长度(L) Length(L) mm	24.4	24.4	26.8	26.8	26.8	31.7	31.7	31.7	31.7	36.6	36.6	36.6	36.6
空载转速 No-load speed r/min	1213	869	321	237	167	88	63	45	32	24	17	12	8.7
额定转速 Rated speed r/min	900	645	239	176	124	65	47	33	24	18	13	9.1	6.5
额定转矩 Rated torque N.m	0.010	0.014	0.034	0.046	0.066	0.11	0.16	0.22	0.30	0.37	0.5	0.5	0.5
最大瞬间允许负载 Max. permissible load in a short time N.m	0.15	0.15	0.6	0.6	0.6	1.2	1.2	1.2	1.2	1.5	1.5	1.5	1.5

配置 22ZY38B-1260 直流电机 (22ZY38B-1260 DC Motor)

减速比 Reduction ratio	3.7	5.2	14	19	27	51	71	100	139	189	264	369	516
减速级数 Number of gear trains	1	1	2	2	2	3	3	3	3	4	4	4	4
减速器长度(L) Length(L) mm	24.4	24.4	26.8	26.8	26.8	31.7	31.7	31.7	31.7	36.6	36.6	36.6	36.6
空载转速 No-load speed r/min	1617	1158	429	316	222	118	85	60	43	32	23	16	12
额定转速 Rated speed r/min	1348	965	357	263	185	98	70	50	36	26	19	14	9.7
额定转矩 Rated torque N.m	0.010	0.014	0.034	0.046	0.066	0.11	0.16	0.22	0.30	0.37	0.5	0.5	0.5
最大瞬间允许负载 Max. permissible load in a short time N.m	0.15	0.15	0.6	0.6	0.6	1.2	1.2	1.2	1.2	1.5	1.5	1.5	1.5

● 电动机特性图 Motor Characteristic Figure

