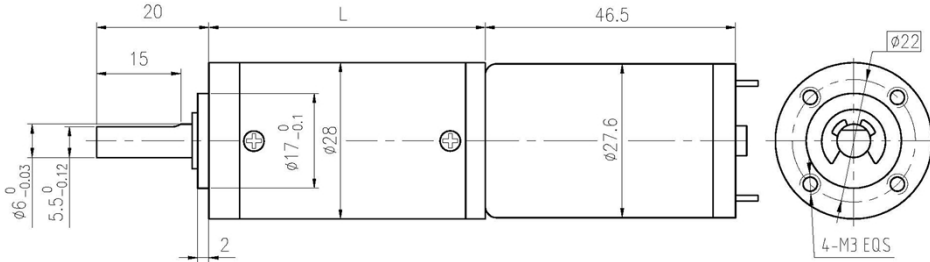


永磁直流行星齿轮电机 (内齿圈材质: 金属)
PM DC Planetary Gear Motor (Ring Gear Material: Metal)

Φ28 行星减速器, 允许转矩范围: 0.3N.m~3.0N.m
28mm OD Planetary Gearbox,
Permissible Load Range: 0.3N.m~3.0N.m

28JXB30K/28ZY47

● 外形和安装尺寸 Dimensions



● 电动机主要技术参数 Motor Technical Data

电机型号 TYPE	额定电压 Rated voltage VDC	空载转速 No-load speed r/min	空载电流 No-load current mA	额定转速 Rated speed r/min	额定转矩 Rated torque mN.m	输出功率 Output power W	额定电流 Rated current mA	堵转力矩 Stall torque mN.m	堵转电流 Stall current A
28ZY47-2450	24	5000	80	3800	7	2.8	230	25	0.7
28ZY47-2467	24	6700	100	5100	15	8.0	460	55	1.8

● 齿轮减速电机主要技术参数 Gear Motor Technical Data

配置 28ZY47-2450 直流电机 (28ZY47-2450 DC Motor)

减速比 Reduction ratio	3.7	5.2	14	19	27	51	71	100	139	189	264	369	516	720
减速级数 Number of gear trains	1	1	2	2	2	3	3	3	3	4	4	4	4	4
减速器长度(L) Length(L) mm	31.0	31.0	40.1	40.1	40.1	49.0	49.0	49.0	49.0	57.9	57.9	57.9	57.9	57.9
空载转速 No-load speed r/min	1348	965	357	263	185	98	70	50	36	26	19	14	9.7	6.9
额定转速 Rated speed r/min	1024	734	271	200	141	75	54	38	27	20	14	10	7.4	5.3
额定转矩 Rated torque N.m	0.02	0.03	0.08	0.11	0.15	0.26	0.36	0.51	0.71	0.86	1.2	1.7	2.4	3
最大瞬间允许负载 Max. permissible load in a short time N.m	1.0	1.0	3.5	3.5	3.5	7.5	7.5	7.5	7.5	9	9	9	9	9

配置 28ZY47-2467 直流电机 (28ZY47-2467 DC Motor)

减速比 Reduction ratio	3.7	5.2	14	19	27	51	71	100	139	189	264	369	516
减速级数 Number of gear trains	1	1	2	2	2	3	3	3	3	4	4	4	4
减速器长度(L) Length(L) mm	31.0	31.0	40.1	40.1	40.1	49.0	49.0	49.0	49.0	57.9	57.9	57.9	57.9
空载转速 No-load speed r/min	1806	1293	479	353	248	131	94	67	48	35	25	18	13
额定转速 Rated speed r/min	1375	985	364	268	189	100	72	51	37	27	19	14	9.9
额定转矩 Rated torque N.m	0.05	0.07	0.17	0.23	0.33	0.56	0.78	1.1	1.5	1.8	2.6	3	3
最大瞬间允许负载 Max. permissible load in a short time N.m	1.0	1.0	3.5	3.5	3.5	7.5	7.5	7.5	7.5	9	9	9	9

● 电动机特性图 Motor Characteristic Figure

