

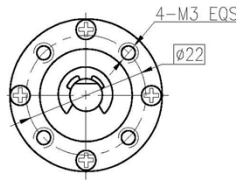
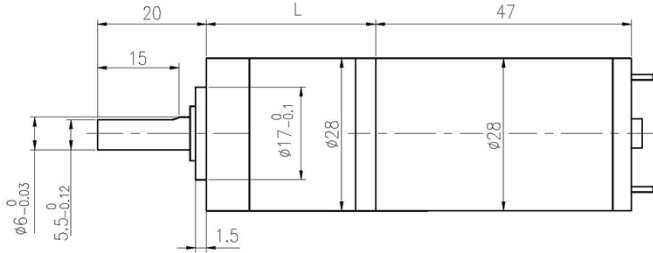
永磁直行星齿轮电机 (内齿圈材质: 金属和粉末金属)

PM DC Planetary Gear Motor (Ring Gear Material: Metal and Powder Metal)

28JXE10K/28ZY47 $\Phi 28$ 行星减速器, 允许转矩范围: 0.1N.m~1.0N.m
 28mm OD Planetary Gearbox,
 Permissible Load Range: 0.1N.m~1.0N.m

可在两种材质的内齿圈中进行选择: 粉末金属 (型号 28JXF10K), 金属 (型号 28JXE10K)
 Ring gear can be selected within the two materials: Powder metal (Type: 28JXF10K), Metal (Type: 28JXE10K)

● 外形和安装尺寸 Dimensions



● 电动机主要技术参数 Motor Technical Data

电机型号 TYPE	额定电压 Rated voltage VDC	空载转速 No-load speed r/min	空载电流 No-load current mA	额定转速 Rated speed r/min	额定转矩 Rated torque mN.m	输出功率 Output power W	额定电流 Rated current mA	堵转力矩 Stall torque mN.m	堵转电流 Stall current A
28ZY47-2445	24	5000	80	3800	7	2.8	230	25	0.7
28ZY47-2467	24	6700	100	5100	15	8.0	460	55	1.8

● 齿轮减速电机主要技术参数 Gear Motor Technical Data

配置 28ZY47-2445 直流电机 (28ZY47-2445 DC Motor)

减速比 Reduction ratio	3.7	5.2	14	19	27	51	71	100	139
减速级数 Number of gear trains	1	1	2	2	2	3	3	3	3
减速器长度(L) Length(L) mm	23.5	23.5	32.0	32.0	32.0	40.3	40.3	40.3	40.3
空载转速 No-load speed r/min	1348	965	357	263	185	98	70	50	36
额定转速 Rated speed r/min	1024	734	271	200	141	75	54	38	27
额定转矩 Rated torque N.m	0.02	0.03	0.08	0.11	0.15	0.26	0.36	0.51	0.71
最大瞬间允许负载 Max. permissible load in a short time N.m	0.3	0.3	1.2	1.2	1.2	2.5	2.5	2.5	2.5

配置 28ZY47-2467 直流电机 (28ZY47-2467 DC Motor)

减速比 Reduction ratio	3.7	5.2	14	19	27	51	71	100	139
减速级数 Number of gear trains	1	1	2	2	2	3	3	3	3
减速器长度(L) Length(L) mm	23.5	23.5	32.0	32.0	32.0	40.3	40.3	40.3	40.3
空载转速 No-load speed r/min	1806	1293	479	353	248	131	94	67	48
额定转速 Rated speed r/min	1375	985	364	268	189	100	72	51	37
额定转矩 Rated torque N.m	0.05	0.07	0.17	0.23	0.33	0.56	0.78	1.1	1.5
最大瞬间允许负载 Max. permissible load in a short time N.m	0.3	0.3	1.2	1.2	1.2	2.5	2.5	2.5	2.5

● 电动机特性图 Motor Characteristic Figure

