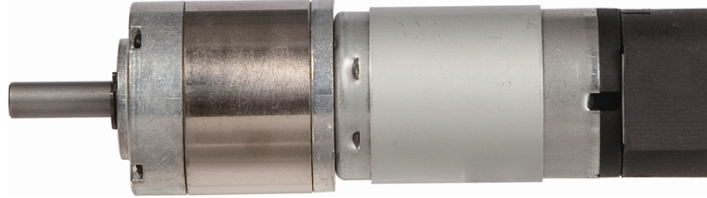


## 32JXE30K/28ZY47P

Φ32 行星减速器, 允许转矩范围: 0.3N.m~3.0N.m  
32mm OD Planetary Gearbox,  
Permissible Load Range: 0.3N.m~3.0N.m



### 电动机主要技术参数 Motor Technical Data

电机型号 TYPE	额定电压 Rated voltage VDC	空载转速 No-load speed r/min	空载电流 No-load current mA	额定转速 Rated speed r/min	额定转矩 Rated torque mN.m	输出功率 Output power W	额定电流 Rated current mA	堵转力矩 Stall torque mN.m	堵转电流 Stall current A
28ZY47P-2460	24	6000	100	4500	17	8.0	470	65	1.8

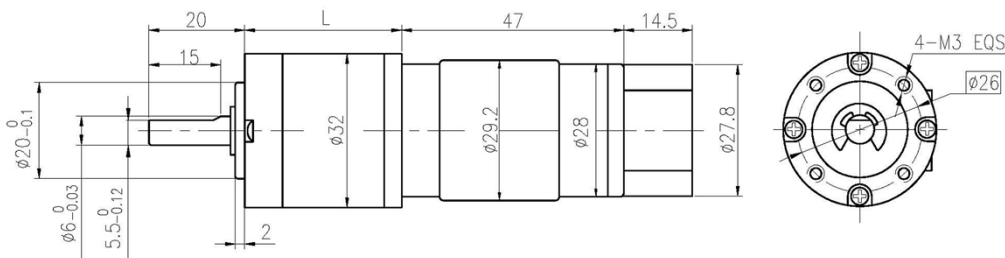
电机型号中增加代号 P, 表示配置了屏蔽罩, 直径为 Φ28.9。 P - Shielding case, OD 28.9mm.

### 齿轮减速电机主要技术参数 Gear Motor Technical Data

配置 28ZY47P-2460 直流电机 (28ZY47P-2460 DC Motor)

减速比 Reduction ratio	3.7	5.2	14	19	27	51	71	100	139	181	218	253	305	354
减速级数 Number of gear trains	1	1	2	2	2	3	3	3	3	4	4	4	4	4
减速器长度(L) Length(L) mm	25.7	25.7	32.8	32.8	32.8	39.7	39.7	39.7	39.7	46.6	46.6	46.6	46.6	46.6
空载转速 No-load speed /min	1617	1158	429	316	222	118	85	60	43	33	28	24	20	17
额定转速 Rated speed r/min	1213	869	321	237	167	88	63	45	32	25	21	18	15	13
额定转矩 Rated torque N.m	0.06	0.08	0.19	0.26	0.37	0.63	0.88	1.2	1.7	2.0	2.4	2.8	3	3
最大瞬间允许负载 Max. permissible load in a short time N.m	1.0	1.0	3.5	3.5	3.5	7.5	7.5	7.5	7.5	9	9	9	9	9

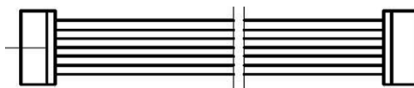
### 外形和安装尺寸 Dimensions



### 配置磁编码器 Magnetic Encoder

Model: CBM28-3 2channels, CW/CCW, 3PPR

Flat cable length 250mm



1. MOTOR-
2. MOTOR+
3. HALL SENSOR Vcc
4. HALL SENSOR GND
5. HALL SENSOR A Vout
6. HALL SENSOR B Vout