

# 永磁直流齿轮减速电机 PM DC Spur Gear Motor

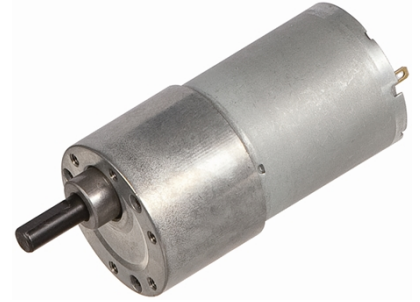
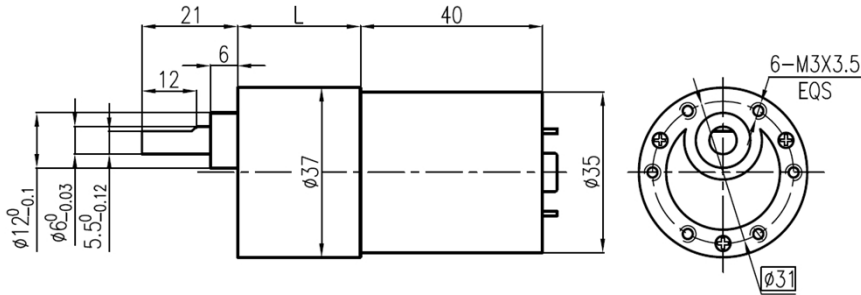
37JB6K/35ZY40

Φ37 标准型减速器, 允许转矩范围: 0.6N.m

37mm OD Standard Gearbox,

Permissible Load Range: 0.6N.m

## 外形和安装尺寸 Dimensions



## 电动机主要技术参数 Motor Technical Data

电机型号 TYPE	额定电压 Rated voltage VDC	空载转速 No-load speed r/min	空载电流 No-load current mA	额定转速 Rated speed r/min	额定转矩 Rated torque mN.m	输出功率 Output power W	额定电流 Rated current mA	堵转转矩 Stall torque mN.m	堵转电流 Stall current A
35ZY40-1230	12	3000	80	2300	7	2.1	400	30	0.8
35ZY40-1250	12	5000	100	4100	8	3.5	570	46	2.2

## 齿轮减速电机主要技术参数 Gear Motor Technical Data

配置 35ZY40-1230 直流电机 (35ZY40-1230 DC Motor)

减速比 Reduction ratio	6	10	18	30	50	75	100	150	200	250	300
减速级数 Number of gear trains	2	2	3	3	4	4	4	5	5	5	5
减速器长度(L) Length(L) mm	19	19	21.5	21.5	24	24	24	26.5	26.5	26.5	26.5
空载转速 No-load speed r/min	500	300	167	100	60	40	30	20	15	12	10
额定转速 Rated speed r/min	383	230	128	77	46	31	23	16	12	10	8.5
额定转矩 Rated torque N.m	0.03	0.05	0.09	0.15	0.23	0.35	0.46	0.6	0.6	0.6	0.6
最大瞬间允许负载 Max. permissible load in a short time N.m	0.3	0.3	0.6	0.6	1.2	1.2	1.2	1.8	1.8	1.8	1.8
转向 Direction of rotation	CCW	CCW	CW	CW	CCW	CCW	CCW	CW	CW	CW	CW

配置 35ZY40-1250 直流电机 (35ZY40-1250 DC Motor)

减速比 Reduction ratio	6	10	18	30	50	75	100	150	200	250	300
减速级数 Number of gear trains	2	2	3	3	4	4	4	5	5	5	5
减速器长度(L) Length(L) mm	19	19	21.5	21.5	24	24	24	26.5	26.5	26.5	26.5
空载转速 No-load speed r/min	833	500	278	167	100	67	50	33	25	20	17
额定转速 Rated speed r/min	683	410	228	137	82	55	41	28	23	18	16
额定转矩 Rated torque N.m	0.04	0.06	0.11	0.18	0.26	0.39	0.52	0.6	0.6	0.6	0.6
最大瞬间允许负载 Max. permissible load in a short time N.m	0.3	0.3	0.6	0.6	1.2	1.2	1.2	1.8	1.8	1.8	1.8
转向 Direction of rotation	CCW	CCW	CW	CW	CCW	CCW	CCW	CW	CW	CW	CW

## 电动机特性图 Motor Characteristic Figure

