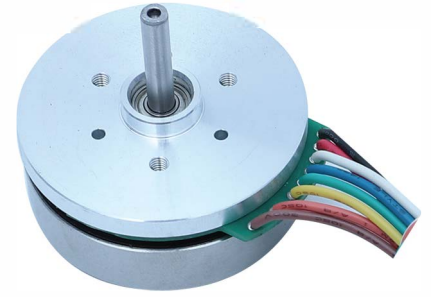


45mm Outer Rotor Brushless DC Motor



GENERAL SPECIFICATION

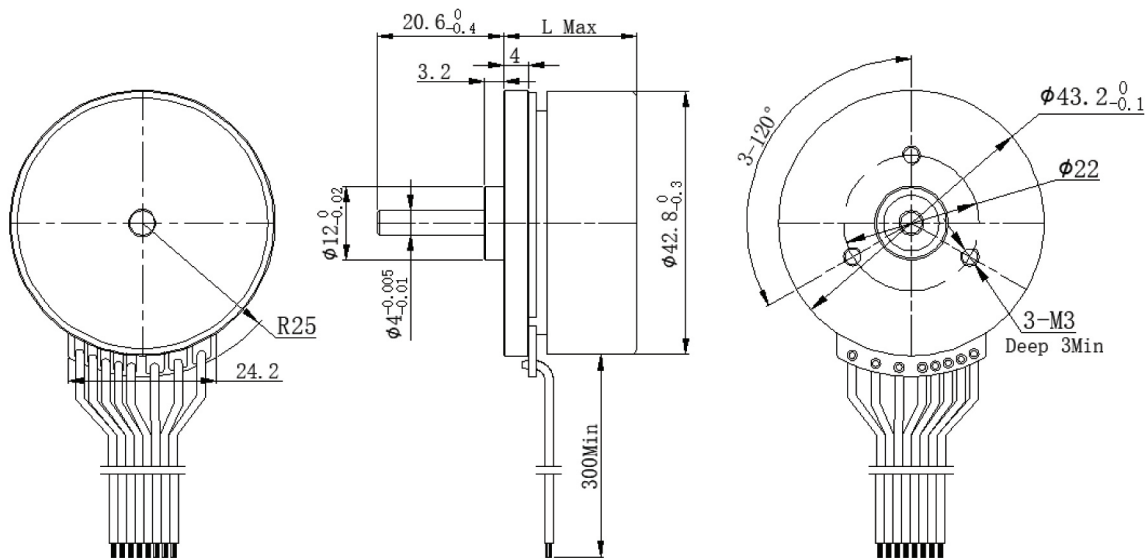
Winding type	Star	Insulation Resistance	100MΩMin. ,500VDC
Hall effect angle	120 degree electrical angle	Dielectric Strength	500VAC for one minute
Resistance Accuracy	±10% @20°C	Shaft Radial Play	0.02Max. (450 g-load)
Inductance Accuracy	±20% @1kHz	Shaft Axial Play	0.15Max. (450 g-load)
Ambient Temperature	-20°C~+50°C	Insulation class	Class B

ELECTRICAL SPECIFICATION

Model		45DMWO18-2450	45DMWO22-2452	45DMWO27-2448
Number of poles		16		
Number of phase		3		
Rated voltage	VDC	24		
Rated speed	RPM	5000	5250	4860
No-load speed	RPM	6500	6710	6110
No-load current	A	0.5	0.5	0.5
Rated power	W	30	50	70
Rated torque	mN.m	50	84	130
Rated current	A	1.6	2.6	3.6
Peak torque	mN.m	150	252	390
Peak current	A	4.8	7.8	10.8
Maximum efficiency	%	80	83	85
Line to line resistance	ohms	1.42	0.7	0.56
Line to line inductance	mH	0.59	0.33	0.27
Torque constant	mN.m/A	35.3	34.2	37.2
Back E.M.F	Vrms/KRPM	2.61	2.53	2.75
Rotor inertia	g.cm ²	99	135	181
Weight	Kg	0.08	0.12	0.15
Length	mm	18	21.6	27

45mm Outer Rotor Brushless DC Motor

DIMENSIONS



WIRE DIAGRAM

Lead NO.	Lead Color	Lead Gauge	Function	Instructions
1	RED	UL1430 24AWG	Vcc	Hall positive: +5V~+24V DC
2	BLUE		HALL A	
3	GREEN		HALL B	
4	WHITE		HALL C	
5	BLACK	UL1430 24AWG	GND	HALL negative
6	ORANGE		PHASE U	
7	BROWN		PHASE V	
8	YELLOW		PHASE W	