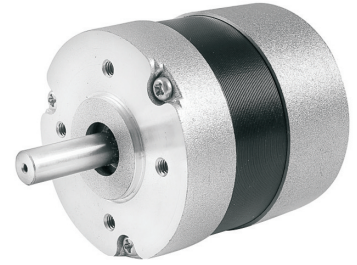


57 SERIES BLDC Motor (High Torque, 6 poles)



GENERAL SPECIFICATION

Winding type: Star
Hall effect angle: 120 degree electrical angle
Shaft run out: 0.025mm
Insulation Class: Class B
Dielectric strength: 500VDC for one minute
Ambient temperature: -20—+40°C

WIRE DIAGRAM

Lead No.	Lead Color	Lead Gauge	Function
1	RED	18AWG UL1569	Phase U
2	YEL		Phase V
3	BLA		Phase W
4	RED	26AWG UL1569	+5V
5	BLU		Hall A
5	GRE		Hall B
7	WHI		Hall C
8	BLA		GND

ELECTRICAL SPECIFICATION

Model		57DMWH54(6)-2435	57DMWH69(6)-2435	57DMWH105(6)-2435
Voltage	V	24		
Number of poles		6		
Rated power	W	70	140	260
No load speed	rpm	4700	4700	4700
Rated torque	Nm	0.2	0.37	0.7
Rated Speed	rpm	3500	3500	3500
Rated Current	A	4	8	15
Peak Torque	Nm	0.6	1.1	2.1
Weight	Kg	0.5	0.7	1.3
Length	mm	54	69	105

DIMENSIONS

