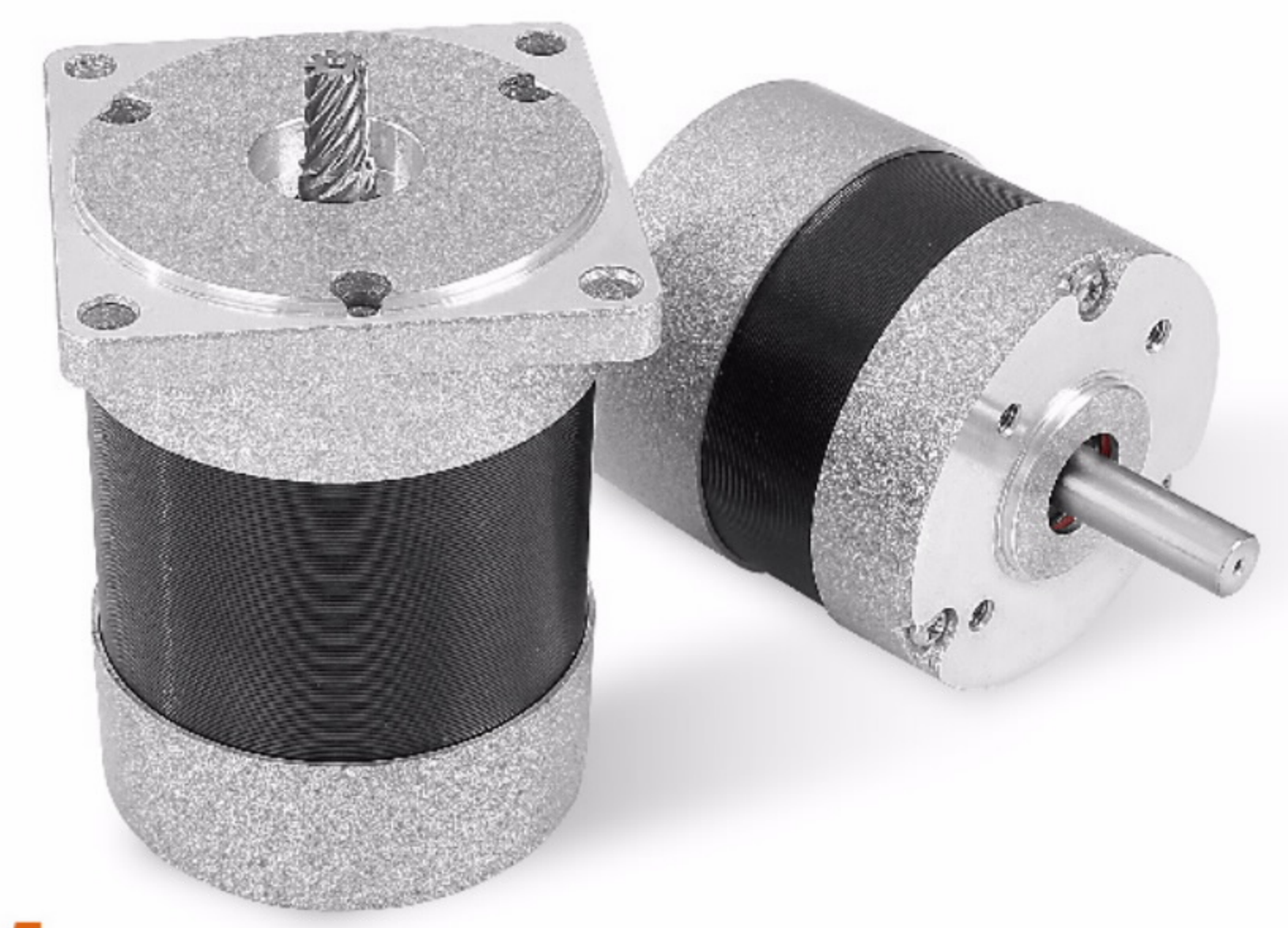


57 SERIES BLDC Motor



GENERAL SPECIFICATION

Winding type: Star
Hall effect angle: 120 degree electrical angle
Shaft run out: 0.025mm
Insulation Class: Class B
Dielectric strength: 500VDC for one minute
Ambient temperature: -20—+40 °C

WIRE DIAGRAM

Lead No.	Lead Color	Lead Gauge	Function
1	RED	18AWG UL1569	Phase U
2	YEL		Phase V
3	BLA		Phase W
4	RED	26AWG UL1569	+5V
5	BLU		Hall A
5	GRE		Hall B
7	WHI		Hall C
8	BLA		GND

ELECTRICAL SPECIFICATION

Model		57DMW45-3640	57DMW55-3640	57DMW75-3640	57DMW95-3640	57DMW115-3640
Voltage	V	36				
Number of poles		4				
Rated power	W	25	50	90	130	170
No load speed	rpm	5200	5200	5200	5300	5400
Rated torque	Nm	0.055	0.11	0.22	0.32	0.42
Rated Speed	rpm	4000	4000	4000	4000	4000
Rated Current	A	1.0	1.8	3.2	4.7	6.5
Torque(max)	Nm	0.16	0.3	0.5	0.8	1.2
Back-EMF constant	V/Krpm	4.4	4.5	4.8	4.83	4.9
Torque Constant	Nm/A	0.07	0.072	0.078	0.08	0.09
Resistance	ohm	3.4	1.7	0.75	0.5	0.39
Weight	Kg	0.35	0.45	0.8	1.1	1.4
Length	mm	45	55	75	95	115

DIMENSIONS

