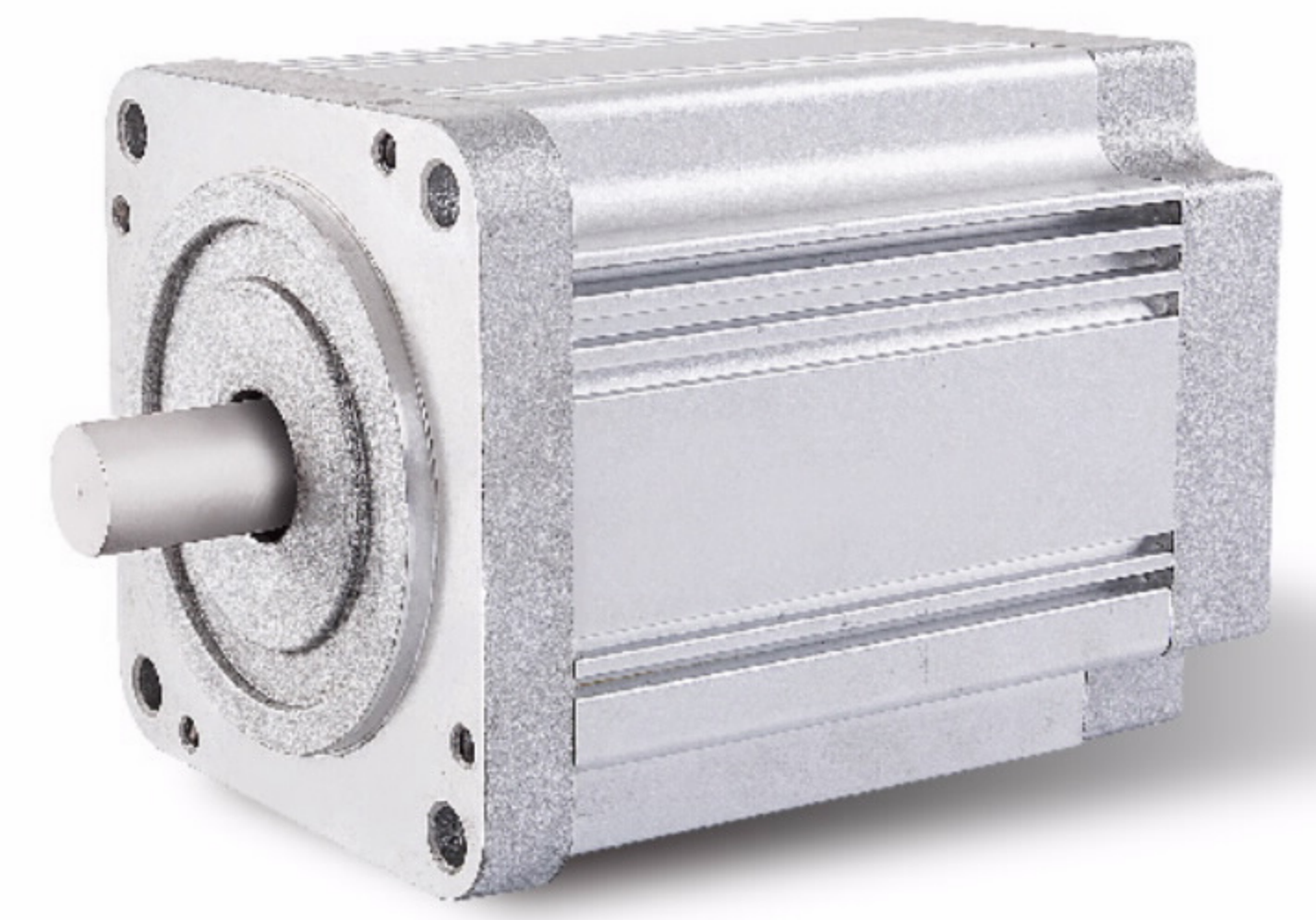


80 SERIES BLDC Motor



GENERAL SPECIFICATION

Winding type: Star
Hall effect angle: 120 degree electrical angle
Shaft run out: 0.025mm
Insulation Class: Class B
Dielectric strength: 500VDC for one minute
Ambient temperature: -20—+40 °C

WIRE DIAGRAM

Lead No.	Lead Color	Lead Gauge	Function
1	RED	16AWG UL1569	Phase U
2	YEL		Phase V
3	BLA		Phase W
4	RED	26AWG UL1569	+5V
5	BLU		Hall A
5	GRE		Hall B
7	WHI		Hall C
8	BLA		GND

ELECTRICAL SPECIFICATION

Model		80DMW85-2430	80DMW105-2430	80DMW125-2430
Voltage	V	24		
Number of poles		4		
Rated power	W	100	200	300
No load speed	rpm	4200	4200	4200
Rated torque	Nm	0.32	0.65	1
Rated Speed	rpm	3000	3000	3000
Rated Current	A	5.2	10.5	15
Torque(max)	Nm	79	157	236
Back-EMF constant	V/Krpm	9	9.2	9.5
Torque Constant	Nm/A	0.06	0.052	0.05
Resistance	ohm	0.5	0.43	0.35
Weight	Kg	1.6	2.2	3
Length	mm	85	105	125

DIMENSIONS

