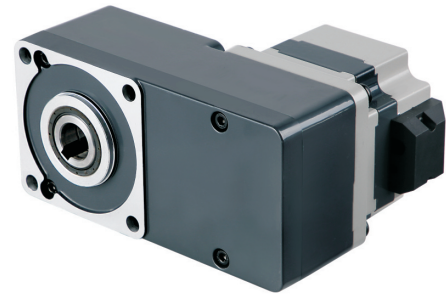


## 86DMW+5GUL



### BLDC MOTOR SPECIFICATION

TYPE	Rated voltage	No-load speed	Rated speed	Rated torque	Rated power	Rated current	Length
	VDC	rpm	rpm	N.m	W	A	mm
86DMW55-2430	24	3800	3000	0.33	100	6	55
86DMW65-2430	24	3800	3000	0.67	200	12	65
86MDW75-2430	24	3800	3000	1	300	18	75

### L TYPE GEAR MOTOR SPECIFICATION

#### 86DMW55-2430

Reduction ratio		5	10	15	20	30	50	100	200
Efficiency		74%	89%						
Rated speed	rpm	600	300	200	150	100	60	30	15
Rated Toqrue	Nm	1.2	2.4	3.5	4.8	7	12	24	40

#### 86DMW65-2430

Reduction ratio		5	10	15	20	30	50	100	200
Efficiency		74%	89%						
Rated speed	rpm	600	300	200	150	100	60	30	15
Rated Toqrue	Nm	2.4	4.8	7	9.6	14	24	45	65

#### 86DMW75-2430

Reduction ratio		5	10	15	20	30	50	100	200
Efficiency		74%	89%						
Rated speed	rpm	600	300	200	150	100	60	30	15
Rated Toqrue	Nm	3.5	8	12	16	24	38	50	70

All gear box output turn direction in above form are opposite as motor direction

# 86DMW+5GUL

## DIMENSIONS

