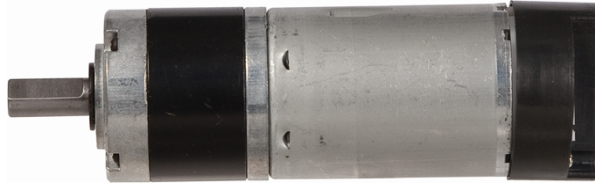


36JXE30K/36ZY50

Φ36 行星减速器, 允许转矩范围: 0.3N.m~3.0N.m
36mm OD Planetary Gearbox,
Permissible Load Range: 0.3N.m~3.0N.m

可在两种材料的内齿圈中进行选择: 粉末金属 (型号 36JXF30K), 金属 (型号 36JXE30K)
Ring gear can be selected within the two materials: Powder metal (Type:36JXF30K), Metal (Type:36JXE30K)



● 电动机主要技术参数 Motor Technical Data

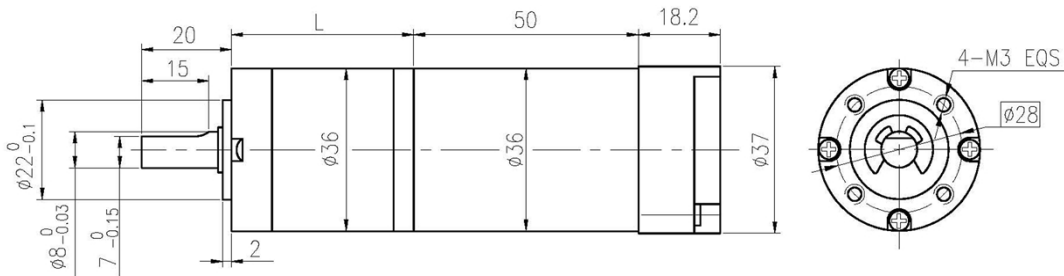
电机型号 TYPE	额定电压 Rated voltage VDC	空载转速 No-load speed r/min	空载电流 No-load current mA	额定转速 Rated speed r/min	额定转矩 Rated torque mN.m	输出功率 Output power W	额定电流 Rated current A	堵转力矩 Stall torque mN.m	堵转电流 Stall current A
36ZY50-2442	24	4200	120	3450	12	4.2	0.43	52	1.6

● 齿轮减速电机主要技术参数 Gear Motor Technical Data

配置 36ZY50-2442 直流电机 (36ZY50-2442 DC Motor)

减速比 Reduction ratio	3.7	5.2	14	19	27	51	71	100	139	181	218	253	305	354	426	495
减速级数 Number of gear trains	1	1	2	2	2	3	3	3	3	4	4	4	4	4	4	4
减速器长度(L) Length(L) mm	26.5	26.5	33.6	33.6	33.6	40.5	40.5	40.5	40.5	47.4	47.4	47.4	47.4	47.4	47.4	47.4
空载转速 No-load speed r/min	1132	811	300	221	156	82	59	42	30	23	19	17	14	12	10	8.5
额定转速 Rated speed r/min	930	666	246	182	128	68	49	35	25	19	16	14	11	9.7	8.1	7.0
额定转矩 Rated torque N.m	0.040	0.056	0.14	0.18	0.26	0.45	0.62	0.88	1.2	1.4	1.7	2.0	2.4	2.8	3	3
最大瞬间允许负载 Max. permissible load in a short time N.m	1.0	1.0	3.5	3.5	3.5	7.5	7.5	7.5	7.5	9	9	9	9	9	9	9

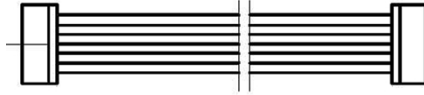
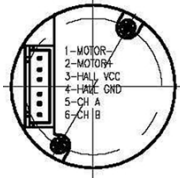
● 外形和安装尺寸 Dimensions



● 配置磁编码器 Magnetic Encoder

Model: CBM36-4 2channels, CW/CCW, 4PPR

Flat cable length 350mm



1. MOTOR-
2. MOTOR+
3. HALL SENSOR Vcc
4. HALL SENSOR GND
5. HALL SENSOR A Vout
6. HALL SENSOR B Vout