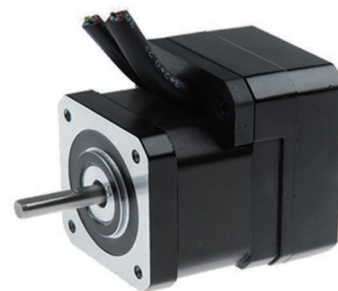


Servo Stepping Motor (NEMA 17 42mm · 1.8°)

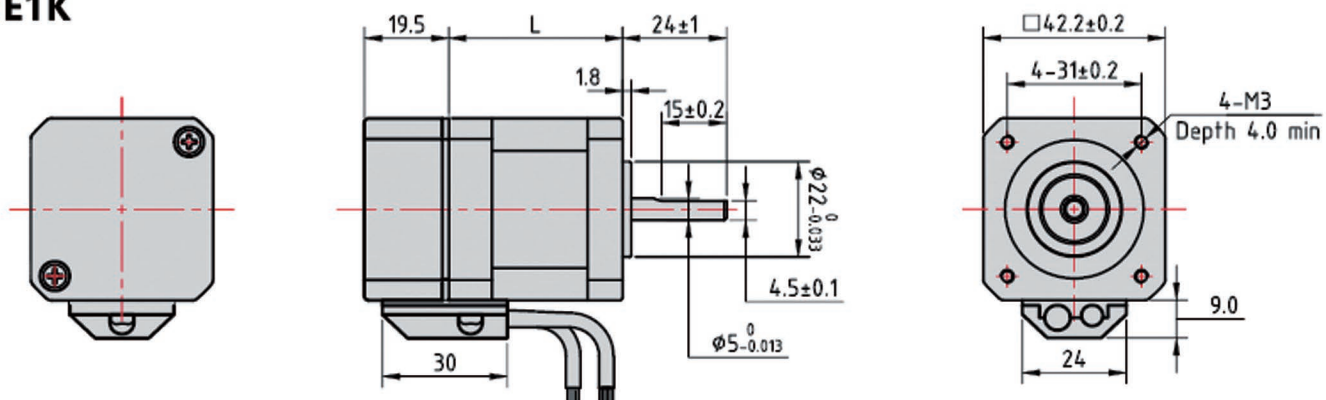


MOTOR SPECIFICATIONS

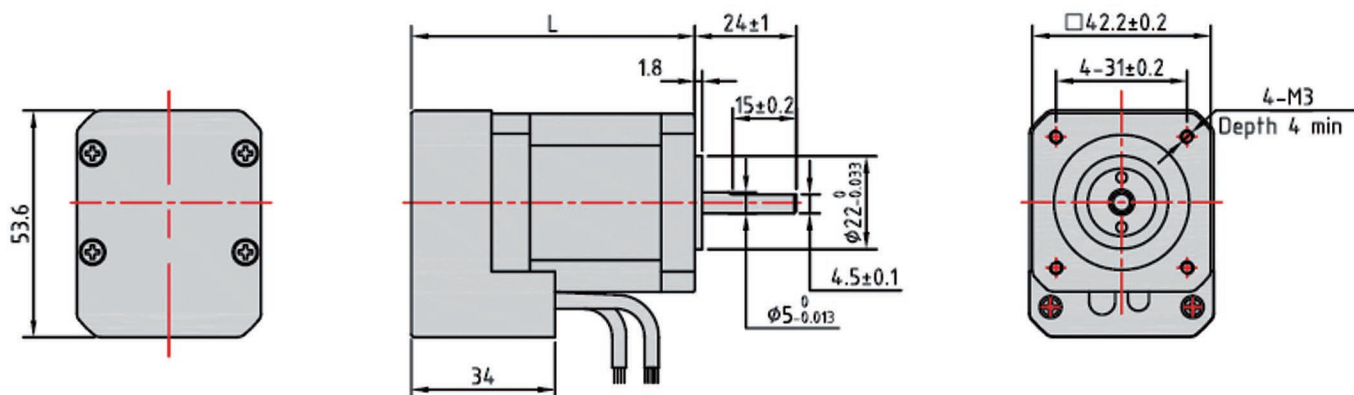
Model	Current	Resistance	Inductance	Holding torque		Inertia	Length	Encoder
	A	$\Omega \pm 10\%$	mH $\pm 20\%$	N.m	OZ.in	g/cm ²	mm Max	Resolution
SD42H249-E1KS	2	1.35	2.9	0.48	68.0	77	68	1000CPR
SD42H249-E2K5ZS	2	1.35	2.9	0.48	68.0	77	68	2500CPR
SD42H261-E1KS	2	1.75	4.0	0.72	102.0	100	80	1000CPR
SD42H261-E3K5ZS	2	1.75	4.0	0.72	102.0	100	80	2500CPR

DIMENSION (UNIT:MM)

● E1K



● E2K5z



Servo Stepping Motor (NEMA 17 42mm · 1.8°)

ENCODER SPECIFICATIONS

Model	E1Kz	E2K5z
Resolution	1000cpr/4000ppr	2500cpr/10000ppr
Type	Incremental Encoder	
Output Mode	Differential	
Output Signal	A+ A-;B+ B-	A+ A-;B+ B-;Z+Z-
Supply Voltage	5VDC±5%	

TORQUE-FREQUENCY CURVE

