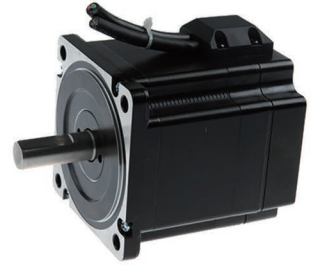


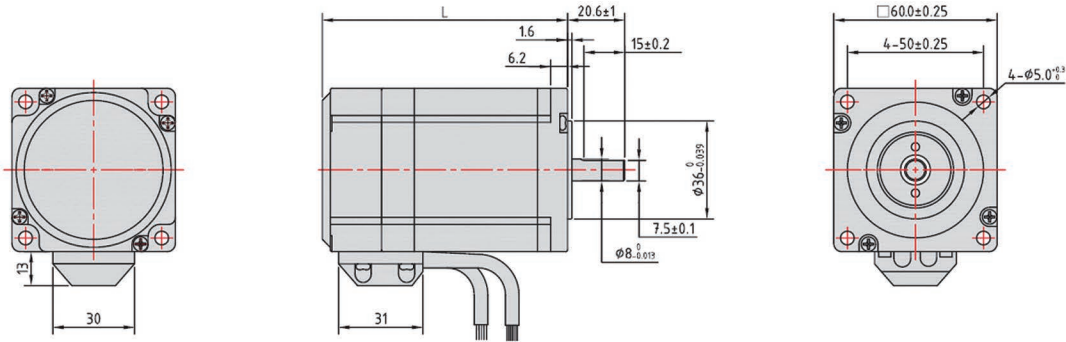
# Servo Stepping Motor(NEMA34 86mm · 1.8° )



## MOTOR SPECIFICATIONS

Model	Current	Resistance	Inductance	Holding torque		Inertia	Length	Encoder
	A	$\Omega \pm 10\%$	mH $\pm 20\%$	N.m	OZ.in	g/cm <sup>2</sup>	mm Max	Resolution
SD86H280-E1KS	6	0.45	3.5	4.5	637	0.65	116	1000CPR
SD86H280-E2K5ZS	6	0.45	3.5	4.5	637	0.65	116	2500CPR
SD86H2120-E1KS	6	0.54	5	8.5	1204	1.2	135	1000CPR
SD86H2120-E2K5ZS	6	0.54	5	8.5	1204	1.2	135	2500CPR
SD86H2160-E1KS	6	0.72	7.3	12.0	1700	1.7	176	1000CPR
SD86H2160-E2K5ZS	6	0.72	7.3	12.0	1700	1.7	176	2500CPR

## DIMENSION (UNIT:MM)



## ENCODER SPECIFICATIONS

Model	E1Kz	E2K5z
Resolution	1000cpr/4000ppr	2500cpr/10000ppr
Type	Incremental Encoder	
Output Mode	Differential	
Output Signal	A+ A-;B+ B-	A+ A-;B+ B-;Z+Z-
Supply Voltage	5VDC $\pm 5\%$	

## TORQUE-FREQUENCY CURVE

