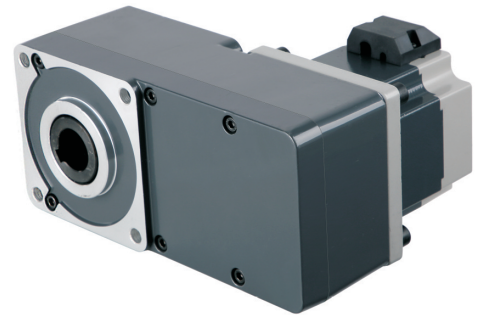


## 86DMW+6GUL



### BLDC MOTOR SPECIFICATION

TYPE	Rated voltage	No-load speed	Rated speed	Rated torque	Rated power	Rated current	Length
	VDC	rpm	rpm	N.m	W	A	mm
86DMW90-2430	24	3800	3000	1.3	400	24	88
86DMW100-2430	24	3800	3000	1.6	500	30	98
86DMW130-2430	24	3800	3000	2.4	750	45	128

### L TYPE GEAR MOTOR SPECIFICATION

#### 86DMW90-2430

Reduction ratio		5	10	15	20	30	50	100	200
Efficiency		74%	89%						
Rated speed	rpm	600	300	200	150	100	60	30	15
Rated Toqrue	Nm	5	10	15	20	30	50	90	100

#### 86DMW100-2430

Reduction ratio		5	10	15	20	30	50	100	200
Efficiency		74%	89%						
Rated speed	rpm	600	300	200	150	100	60	30	15
Rated Toqrue	Nm	7	14	21	28	42	70	100	120

#### 86DMW130-2430

Reduction ratio		5	10	15	20	30	50	100	200
Efficiency		74%	89%						
Rated speed	rpm	600	300	200	150	100	60	30	15
Rated Toqrue	Nm	10	20	30	40	60	100	120	120

All gear box output turn direction in above form are opposite as motor direction

# 86DMW+6GUL

## DIMENSIONS

